



**REDUCING WATER DAMAGE RISK WITH
PIPEBURST PRO**

September 2015



BETA THETA PI
— MEN OF PRINCIPLE —



TODAY'S OUTCOME

Understand the benefits and costs of
PipeBurst Pro.



BETA THETA PI
— MEN OF PRINCIPLE —



“BIG PICTURE” OUTCOME

To have systems and safeguards in place to protect our facilities and make it easy for volunteers to monitor and manage their houses.



4



CORNERSTONE
HOUSING PROGRAM



5

FACILITATORS

Anne Emmerth
Director, Cornerstone Housing Program
Beta Theta Pi

- Anne.Emmerth@betathetapi.org
- 800-800-BETA



6

FACILITATORS

Rich Jungman
Managing Partner
Holmes Murphy

- www.holmesmurphyfraternity.com
- rjungman@willis.com
- 402-898-4179



7

FACILITATORS

Bob Hearn

Vice President, U.S. Sales

Total Leak Concepts

- www.pipeburstpro.com
- bhearn@totalleak.com
- 678-300-2664



THE “WHY”

\$2.7 million



The total amount paid in the FPMA property insurance program on water loss claims during the winter of 2013 - 14.



THE "WHY"

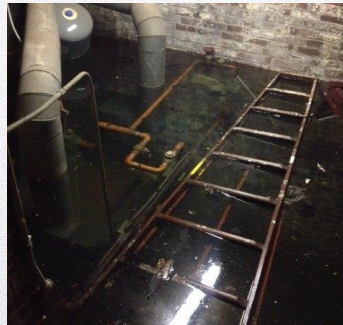
90%

of the water loss claims during the 2013 - 14 policy year happened over winter break.



THE "WHY"

Massachusetts Institute of Technology
\$400,000



THE “WHY”

University of Missouri – St. Louis

\$175,000



BETA THETA PI
MEN OF PRINCIPLE



PIPEBURST PRO: THE “WHAT”

- Water monitoring system
 - Attached to plumbing at key areas
 - Sensors (tells you how much) and flow control (shuts off water at certain trigger levels)
- Tracks unusual water usage
 - Detects leaks, running toilets, dripping faucets
- Monitors temperature in the facility
 - Next generation will monitor humidity levels
- Supports remote volunteers & management
 - Text alerts; online monitoring



BETA THETA PI
MEN OF PRINCIPLE



HOW IT WORKS: FLOWMETER

1. Track water by the gallon
 - Allows for accurate readings of water usage over a user defined period of time
2. User defined parameters for time and consumption
 - Every unit is going to have unique water usage
3. FloMeter settings are easily changed through ionleaks.com
 - Water usage settings can be increased or decreased for high occupancy or vacation time frames



THE WHAT: SYSTEM CONTROLS

1. Remotely Control TickerValves
 - Access TickerValve from a computer, tablet, or smart phone from anywhere in the world
2. Full FloMeter Access
 - Access FloMeter Graph
 - Access FloMeter Data Analysis
 - Access FloMeter Settings
3. Edit Wireless Water Sensor Data
 - Add / remove Wireless Water Sensors
 - Change names for access



THE REALITY

- Industry experts estimate that almost 14% of total water usage in the U.S. is leakage: running toilets, dripping faucets, etc.
- Cost of water / sewage rates continue to rise
 - Especially in certain regions of the country



CASE STUDIES: THETA @ TULANE

“The second floor toilet failed and was dumping water down the drain at a rate of approximately 100 gallons per hour. The PipeBurst Pro system caught the excess flow of water and notified our property manager right away. This allowed the plumber to get on site and find the source of the leak. The Valve and Flush Kit has been replaced/repared and the system is back up and operational.”



CASE STUDIES: THETA @ TULANE

Cost savings:

- 100 gallons / hour
- 2,400 gallons / day
- Current water rates = \$22 / day
- House was closed for summer; 45 – 60 days would be over 100,000 gallons wasted and a loss of up to \$1,000



CASE STUDIES: THETA @ FSU

“The plumber installing the system called and said ‘This thing just doesn’t work. I’ve reset it five times and every time I turn it on it just immediately turns off the valve!’ We looked at the Event Log online. It showed the ice machine was leaking, so every time he opened the valve it would immediately turn off. Once we told him what it was, he fixed the problem at the ice machine and the valve stayed open.”



CASE STUDIES: THETA @ FSU

Cost savings:

- Slow leak of 3 gallons / hour
- Left unchecked over the summer (60 days)
- Would cost more than \$300 at average water rates



INSTALLATION COST

- PipeBurst Pro system = \$2,000 to \$4,000
 - Variability due to size of water line
 - Does not include labor costs for local plumber (estimate \$500 - \$1,000)
 - Does not include IT / internet installation
- Cost savings / ROI
 - Water usage
 - 5% off Cornerstone property insurance premium



HOW TO LEARN MORE

- Contact Bob Hearn to get a quote
 - Work through Cornerstone at Beta's Administrative Office if you need contact info
- Talk to other house corporations on your campus
 - Bob can connect you
 - Some sororities implementing nationwide
- Talk to your property manager



22



CORNERSTONE
HOUSING PROGRAM

Anne.Emmerth@beta.org
800-800-BETA

